

COMMUNITY REDEVELOPMENT AGENCY

Leif J. Ahnell, Executive Director

The mission of the CRA is to advocate, administer the policies, and assist the public, downtown property owners and businesses in order to achieve the CRA Vision of the Downtown.

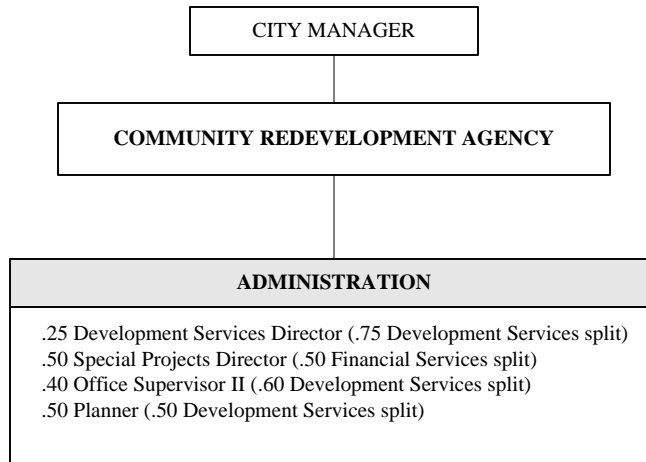
The organizational values of the CRA are to maximize the benefits of Downtown Redevelopment while minimizing cost through the integration and use of City staff.

The CRA Administration provides for the day-to-day operation of the Agency though the use of City staff from the Development Services Department. This includes the Agency office, all general administration, plan review services and the Agency's day-to-day dealings with the public, developers, the City and other governmental agencies.



DIVISION	APPROVED 2008-09 BUDGET
Administration	\$ 383,000
Mizner Park Revenue	15,100,400
Mizner Park Sinking	9,775,400
Mizner Park Lease Revenue	1,180,000
TOTAL	\$ 26,438,800

EXPENDITURE BY CATEGORY	ACTUAL 2006-07 BUDGET	APPROVED 2007-08 BUDGET	REVISED 2007-08 BUDGET	APPROVED 2008-09 BUDGET
Personal Services	66,794	174,700	174,700	183,000
Other Operating	154,788	123,300	280,500	177,200
Supplies	3,040	3,200	3,200	3,200
Transfers	7,951,200	7,488,900	7,488,900	7,849,700
Debt Service	6,552,306	6,454,000	6,454,000	6,551,300
Sub-Total	14,728,128	14,244,100	14,401,300	14,764,400
Reserves	7,012,762	9,825,500	9,825,500	11,674,400
TOTAL	21,740,890	24,069,600	24,226,800	26,438,800
Full-time Employees	2.15	2.15	2.15	1.65



Approved Positions FY 07/08	1.65
Revised Positions FY 07/08	-
Personnel Changes FY 08/09	-
Approved Positions FY 08/09	1.65